

# ONE AND DONE.

THE NUOSS DS DELIVERY SYRINGE:  
PRECISION PLACEMENT AND NO WASTE.



granules in a delivery syringe

- Preloaded with NuOss® Cancellous Bovine Granules
- Simplifies the filling of extraction sockets, infrabony periodontal defects, ridge augmentations and elevating the maxillary sinus floor
- Easy to hydrate and place, minimizes particulate migration

## NuOss® DS

NuOss® natural cancellous xenograft granules are available packaged sterile in a preloaded delivery syringe for ease of product placement. NuOss is a natural, porous bone mineral matrix produced by removing all organic components from bovine bone. The anorganic bone mineral matrix has macro- and microscopic structures similar to human bone.

The proprietary manufacturing process of NuOss allows for maintenance of the naturally occurring bone mineral structure, including macroscopic and microscopic structures. Due to this trabecular architecture with interconnecting macro and micro pores, the ingrowth of new bone and associated vascularization at the site of grafting is optimized.

NuOss may be used with autogenous bone where there is an insufficient quantity of bone to fulfill the needs of the proposed surgical procedure.

### NuOss® DS is recommended for:

- Augmentation or reconstructive treatment of the alveolar ridge.
- Filling of intrabony periodontal defects.
- Filling of defects after root resection, apicoectomy, and cystectomy.
- Filling of extraction sockets to enhance preservation of the alveolar ridge.
- Elevation of the maxillary sinus floor.
- Filling of periodontal defects in conjunction with products intended for Guided Tissue Regeneration (GTR) and Guided Bone Regeneration (GBR).
- Filling of peri-implant defects in conjunction with products intended for Guided Bone Regeneration (GBR).

### NuOss® DS Features

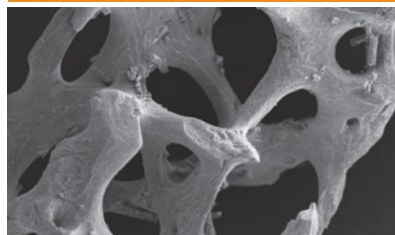
**Handling:** The structure of NuOss aids in particulate hydration and delivery of the product to the defect.

**Particle Distribution:** NuOss maximizes the distribution of the preferred particle sizing within desired ranges.

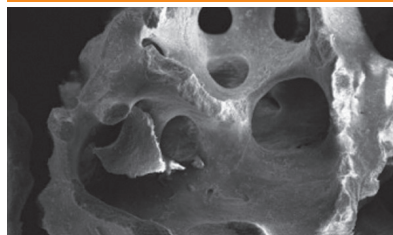
**Particle Structure and Porosity:** NuOss maintains the high porosity and trabecular structure of natural mineralized bone and maximizes the potential for angiogenesis.<sup>1</sup>

**Delivery:** The preloaded NuOss Delivery Syringe makes it easier to hydrate and place the graft material, minimizing preparation time and particulate migration at the surgical site.

NuOss® 50x magnification



Bio-Oss® 50x magnification



ACE Surgical Supply Company, Inc.  
1034 Pearl Street, Brockton, MA 02301  
Phone: 800-441-3100 Fax: 800-583-3150

Copyright © 2017 ACE Surgical Supply Co., Inc. NuOss® DS is manufactured for ACE Surgical by Collagen Matrix, Inc; Oakland, NJ USA. NuOss® is a registered trademark of ACE Surgical Supply Co., Inc. BioOss® is a registered trademark of ED. GEISTLICH SOHNE AG.



delivery syringe



### NuOss® DS Ordering Information

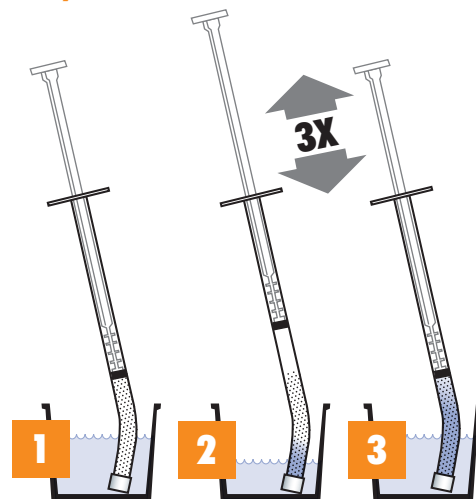
Number Syringe Volume

**Cancellous 0.25 - 1.0mm granules**

509-9025 NuOss DS .25cc

509-9050 NuOss DS .50cc

### Hydration Instructions



After hydration, remove cap for delivery of the product to the defect.

**800-441-3100**

**www.acesurgical.com**

1. Klenke FM, Liu Y, Yuan H, Hunziker EB, Siebenrock KA, Hofstetter W. Impact of pore size on the vascularization and osseointegration of ceramic bone substitutes in vivo. J Biomed Mater Res A. 2008 Jun 1;85(3):777-86.