



Welch Allyn Blood Pressure Products featuring DuraShock™ Technology

WelchAllyn®
Advancing Frontline Care™

Maintain Accurate Blood Pressure

Welch Allyn's complete line of aneroid sphygmomanometers incorporating our shock-resistant DuraShock Technology offers practical benefits compared to traditional aneroid sphygmomanometers. With gear-free DuraShock Technology, you can count on Welch Allyn gauges to:

- > Remain in calibration longer than traditional blood pressure gauges, providing you with readings that maintain accuracy over time.
- > Not need to be replaced as often as traditional aneroids, giving you a lower lifetime cost.
- > Capable of passing AAMI's shock resistant specification of surviving a 76 cm drop onto a hard surface and remaining in calibration.

Platinum Series

All products in the Platinum Series product range incorporate the following features:

- Jeweled movement for long life
- Laser-engraved dial for accuracy
- Premium inflation system for comfort
- Super shock-resistant—can withstand up to 60" drop and remain accurate
- Lifetime calibration warranty
- Premium aesthetics

Tycos® Classic Models: DS58, DS48, DS48A

The Welch Allyn Tycos DS58 Classic is one of three premium models in this new Welch Allyn product range. In addition to the features listed here, the DS58 features an ergonomic inflation bulb designed to enhance comfort while inflating a cuff.

The DS48 Classic aneroid plugs directly into an integrated cuff, providing a more robust design that is twice as shock resistant as the current DS44 and DS45 Integrated gauges from Welch Allyn. The gauge rotates 360° for easy viewing from any angle.

The DS48A Classic pocket style aneroid is lightweight and will not weigh down a cuff on a patient's arm.



Readings with Lower Lifetime Cost



Gold Series

All products in the Gold Series product range incorporate the following features:

- Jeweled movement for long life
- Laser-engraved dial for accuracy
- Shock resistant for accuracy and lower cost over time
- 15-year calibration warranty
- Premium aesthetics

Welch Allyn DS66 Trigger

In addition to the features listed above, the DS66 Trigger features a smooth, trigger-style air release valve and ergonomic design with soft plastic inserts at key touch points for comfort.



Silver Series

All products in the Silver Series product range incorporate the following features:

- Laser-engraved dial for accuracy
- Shock resistant for accuracy and lower cost over time
- 10-year calibration warranty
- Larger inflation bulb than bronze series

Welch Allyn DS45 Integrated

The DS45 Integrated features a unique integrated, cuff-mounted design that is compact and lightweight for ease of use. The gauge rotates 360° for easy viewing from any angle. A bumper around the dial provides added protection and a large inflation bulb and high quality air-release valve make inflation easy.



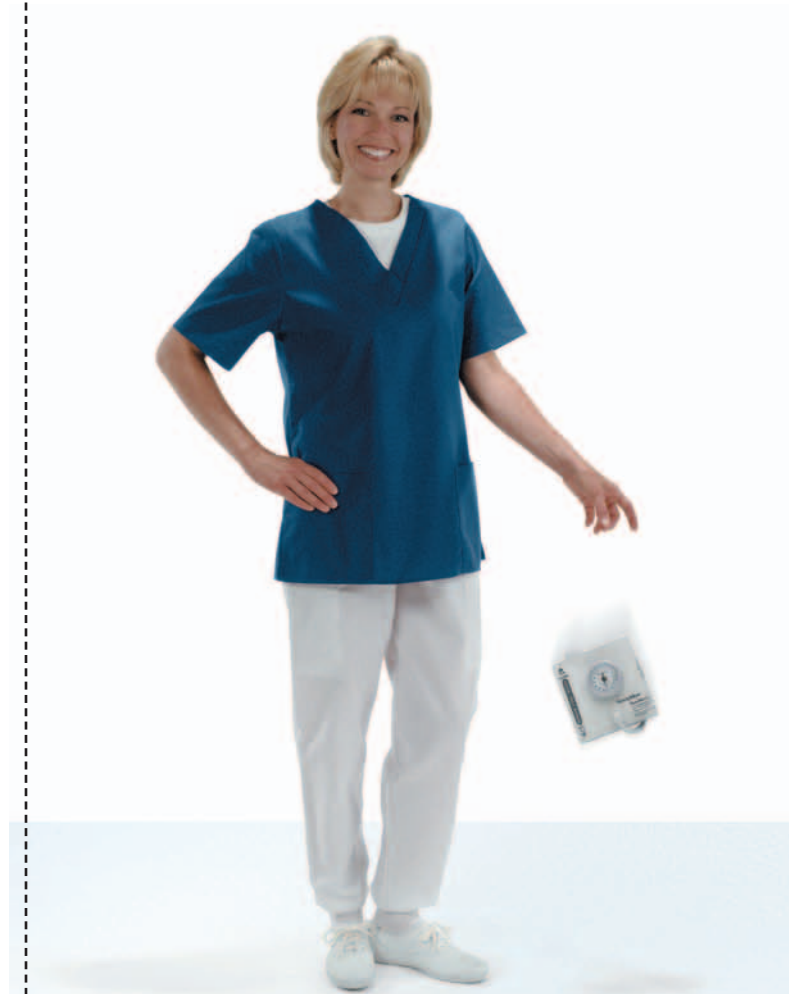
Bronze Series

All products in the Bronze Series product range incorporate the following features:

- Shock resistant for accuracy and lower cost over time
- 5-year calibration warranty

Welch Allyn DS44 Integrated

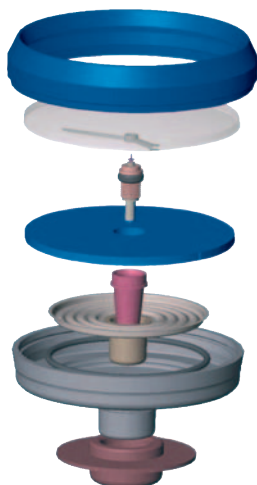
The DS44 Integrated features a unique integrated, cuff-mounted design that is compact and lightweight for ease of use. The gauge rotates 360° for easy viewing from any angle. A bumper around the dial provides added protection. The DS44 is available with four optional color bumpers for variety—blue, purple, red, and green.



How DuraShock Technology Works

In traditional aneroid sphygmomanometer design, several delicate gears and springs convert and amplify vertical movement of the pinion to rotational movement to turn the pointer. The DuraShock gear-free design, however, uses a superior single helix spring to directly convert the vertical movement of the pinion to rotation of the pointer without the use of a multi-step gear arrangement.

By creating a gear-free design, Welch Allyn products with DuraShock technology has fewer moving parts, providing a gauge that is shock resistant and lighter than traditional gauges. Until now, a dropped sphygmomanometer required recalibration or replacement. The DuraShock gauges in the Bronze, Silver, and Gold lines can fall 30 inches onto a hard surface and still remain accurate. The DuraShock gauges in the Platinum line can fall 60 inches onto a hard surface and still remain accurate.



Welch Allyn's aneroid sphygmomanometers incorporating shock-resistant DuraShock Technology offer award-winning design for superior movement and accuracy. It's the first gear-free aneroid capable of meeting the Association for the Advancement of Medical Instrumentation (AAMI) Shock Resistant specification.



Award-Winning Technology

Patented DuraShock Technology is the first major innovation in aneroid sphygmomanometer technology in nearly 100 years. It has received international recognition for medical design and technological significance in the marketplace.



Laser-Engraved Dial Face

All Welch Allyn Platinum, Gold, and Silver line sphygmomanometers feature a gauge that is calibrated by a computer and laser-engraved with a custom made dial face that accurately reflects the readings of the DuraShock aneroid movement inside. This proprietary production process is unique to Welch Allyn and provides you with a sphygmomanometer of extreme accuracy.

Welch Allyn Part Numbers

Welch Allyn Platinum Series

A premium professional line of quality sphygmomanometers

Welch Allyn Tycos DS58 Classic

Hand gauge, thumbscrew release valve

DS58	Aneroid only
DS58-11	Aneroid with adult durable one-piece cuff and zipper case
DS58-11CB	Aneroid with adult durable two-piece cuff and bladder and zipper case
DS58-MC	Aneroid with large adult, adult, small adult, and child print durable one-piece cuff and zipper case
DS58-MCCB	Aneroid with large adult, adult, and child print durable two-piece cuff and bladder and zipper case
DS58-PD	Aneroid with child print, small child, infant, and newborn durable one-piece cuff and zipper case
DS58-PDCB	Aneroid with child print, small child, and infant, durable two-piece cuff and bladder and zipper case
5085-10	Small zipper case
5085-11	Large zipper case

Welch Allyn Tycos DS48 Classic

Integrated gauge (cuff mounted)

DS48	Aneroid only
DS48-11	Aneroid with adult durable one-piece cuff and zipper case
5085-10	Small zipper case

Welch Allyn Tycos DS48A Classic

Pocket gauge (clips on two-piece cuff and bladder)

DS48A	Aneroid only
DS48-11CB	Aneroid with adult durable two-piece cuff and bladder and zipper case
5085-10	Small zipper case

Welch Allyn Gold Series

A professional line of quality sphygmomanometers

Welch Allyn DS66 Trigger

Hand gauge, trigger valve

5098-31	Aneroid only
5098-27	Aneroid with adult durable one-piece cuff and zipper case
5098-27CB	Aneroid with adult durable two-piece cuff and bladder and zipper case
5098-30	Aneroid with large adult, adult, small adult, and child print durable one-piece cuff and zipper case
5098-30CB	Aneroid with large adult, adult, and child print durable two-piece cuff and bladder and zipper case
5085-07	Single zipper case
5085-08	Double zipper case

Welch Allyn Silver Series

An entry-level line of quality sphygmomanometers

Welch Allyn DS45 Integrated

Integrated gauge (cuff mounted)

DS45	Aneroid only
DS45-11	Aneroid with adult durable one-piece cuff
DS45-11C	Aneroid with adult durable one-piece cuff and zipper case
DS45-11CB	Aneroid with integrated gauge adapter and adult durable two-piece cuff and bladder
5085-07	Single zipper case

Welch Allyn Bronze Series

An economy line of quality sphygmomanometers

Welch Allyn DS44 Integrated

Integrated gauge (cuff mounted)

DS44	Aneroid only
DS44-11	Aneroid with adult durable one-piece cuff
DS44-11V	Aneroid with adult durable one-piece cuff and color bumper variety pack
DS44-11C	Aneroid with adult durable one-piece cuff and zipper case
DS44-11CB	Aneroid with integrated gauge adapter and adult durable two-piece cuff and bladder
5085-09	Single zipper case

Specifications

The Welch Allyn DuraShock aneroid sphygmomanometer is accurate to ± 3 mm Hg. This product will maintain the safety and performance characteristics specified at temperatures ranging from 10° C to 40° C at a relative humidity level not to exceed 85-90%.

Standards

American National Standard ANSI/AAMI, SP10: 2002, Manual, electronic, or automated sphygmomanometers.

American National Standard ANSI/AAMI, SP9:1994, Non-automated sphygmomanometers (model DS44 and DS45 only)