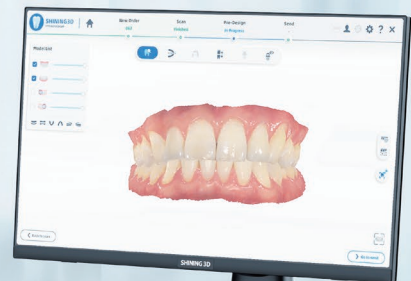


AoStation

All-in-one Cart

Move Freely In Your Office

The touchscreen all-in-one **AoStation** is available for both SHINING 3D Aoralscan 3 and Aoralscan 3 Wireless intraoral scanner, allowing for the effortless mobile use of intraoral scanners in dental clinics.



Streamlined Clinic Management

Experience the simplicity of a single cable solution, reducing clutter and enhancing the user-friendliness of your clinic setup. The cart can be easily moved between chairs, reducing the preparation time before use.

Hassle-Free Integration

Bid farewell to the complexities of computer configurations. Our integrated solution seamlessly merges Aoralscan (including Aoralscan 3 and Aoralscan 3 Wireless) with the cart, eliminating additional technical concerns.



Effortless Operation

Navigate easily with the intuitive large 23.8" FHD touchscreen, ensuring straightforward and user-friendly interactions. Getting rid of the mouse and keyboard makes it easier for users to operate during the scanning and helps to avoid possible contamination.

Enhanced Convenience
(for Aoralscan 3 Wireless)

The base can charge the scanner and get rid of power anxiety in the use of wireless devices, ensuring that your AoStation is always ready to meet your clinical needs.

Uninterrupted Power Supply

With a built-in battery backup, you can rely on up to 1 hour of continuous power supply, providing peace of mind during critical procedures.

TECHNICAL SPECIFICATIONS

Computer Configuration	
CPU	i7-12700 (12 core/25MB/20T/2.10 GHz ~ 4.90 GHz/65W)
RAM	32 GB, 4800 MHz
Hard Drive	M.2 2280, 2 TB, PCIe NVMe x4, SSD
Graphic Card (GPU)	NVIDIA RTX A2000 GDDR6 12GB
Monitor Size	23.8" FHD (Resolution 1920 x 1080)
UPS Parameters	
Input Voltage	220V AC, 50 Hz
Battery Type	Lithium Battery
General Charging Time	8-10 hours
Physical Parameters	
Net Weight (incl. Monitor)	26.5 kg
Overall Dimensions	495 (Length) x 445 (Width) x 1290 (Height) (mm)